

UFFICIO METEOROLOGICO - BTN - STAZIONE MARIO ZUCHELLI
WEATHER OFFICE - TNB - MARIO ZUCHELLI STATION

Alla Sala Operativa
 Al Capo Spedizione

BOLLETTINO METEOROLOGICO DEL 16/11/2005
Meteorological Bulletin of: 16/11/2005

Osservazioni delle ore 08:00 locali - Weather observations at 08:00 L.T.

STAZIONE (Site)	VENTO/Wind Dir (°) / int (kts)		TEMP. °C	UMID. RELAT. RH %	PRESS. HPa
ENEIDE (Baia Terra Nova)	290	11	-9.1	38	988.1
ALESSANDRA (Cape King)	210	02	-10.6	53	979.4
LOLA (Tourmaline Plateau)	060	05	-22.1	50	805.6
ARELIS (Cape Ross)	160	03	-11.1	66	980.1
RITA (Enigma Lake)	300	08	-10.7	30	965.9
SOFIA_B (David Glacier)	//		-21.4	79	813.3
ZORAIDA (Medio Priestley)	360	20	-17.2	27	918.6
MODESTA (Alto Priestley)	310	17	-35.4	62	767.6
SILVIA (Cape Phillips)	120	02	-11.9	71	931.8
WILLIE FIELD (McMurdo)	190	03	-11.4	//	992.7
MANUELA (Inex. Island)	290	13	-14.1	44	989.5
GIULIA (Mid Point)	210	08	-39.1	62	692.5
IRENE (Sitry Point)	160	11	-36.5	61	//
DOME C	170	06	-40.0	//	//

INFORMAZIONI DI CARATTERE AERONAUTICO: (orario GMT)

AERONAUTICAL BULLETINS AND FORECAST: (GMT time)

METAR NZTB 152000Z (160900L) VRB06KT 9999 FEW030 SCT060 BKN100 M9/M19 SDG/HDG RMK BKN SLP995 GRID33008KT A33008KT B27006KT C24012KT=

Mario Zucchelli Station Aviation Forecast

TAF NZTB 151812Z (160701L) VRB05KT 9999 SCT030 BKN060

BECMG 152124Z (161013L) 20010KT 6000 -SN SCT015 BKN030 OVC060

BECMG 160812Z (162101L) 26015KT 8000 VCSN SCT020 BKN050=

McMurdo Ice Runway Forecast

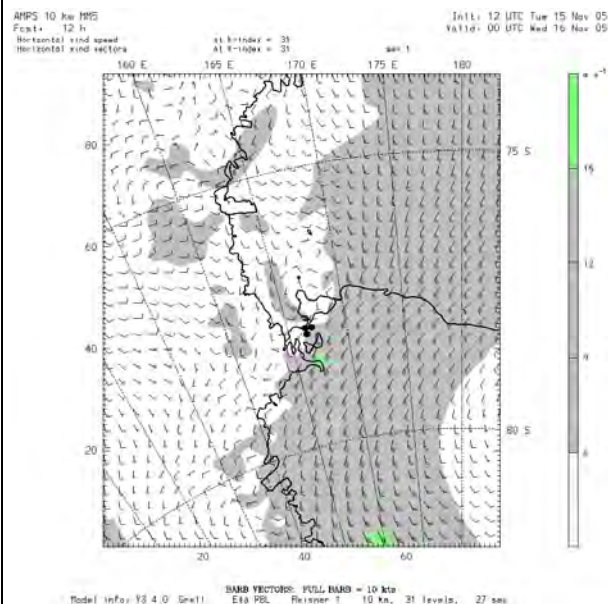
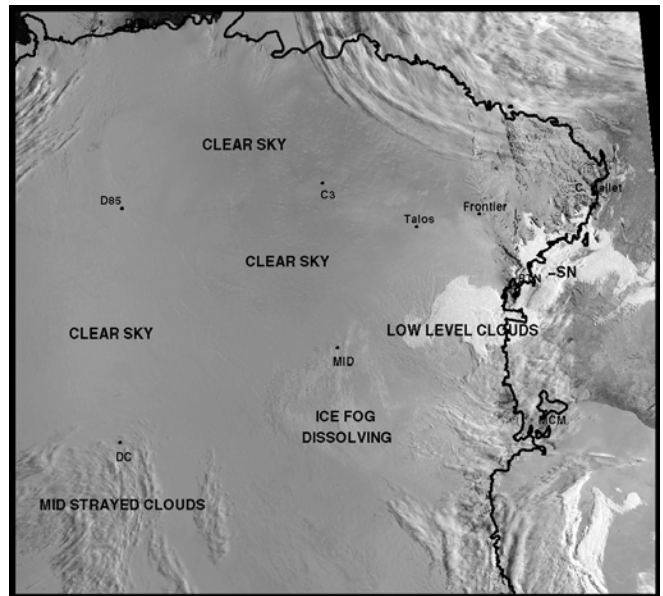
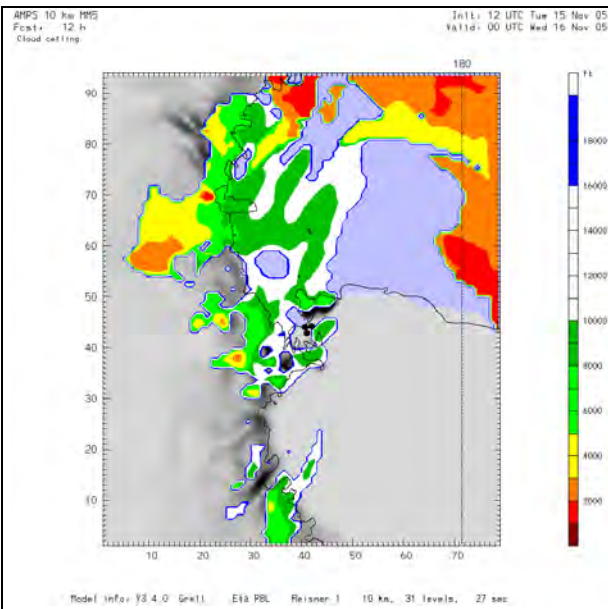
NZIR TAF 150909 (152222L) 08014KT 9999 FEW035 SCT050 BKN100 QNH2918INS GRID25014KT TEMPO 0911 (152224L) 12018G25KT GRID29018G25KT BECMG 2123 (161012L) 13015G20KT 9999 SCT035 SCT050 OVC100 QNH2940INS GRID30015G20KT BECMG 0305 (161618L) 15020G29KT 9999 DRSN VCSN SCT030 OVC050 QNH2935INS GRID32020G29KT=

Temperatura di windchill a Terra Nova alle ore 09:00 locali: - 20 °C

Windchill temperature in Terra Nova at 09:00 local time: - 20 °C

Dati Statistici di ieri 15/10/2005 (Statistics about yesterday)

Temperatura Massima	(ore : 16.19L)	- 4,4 °C
Temperatura Minima	(ore : 00.38L)	- 8,0 °C
Umidità Minima	(ore : 06.36L)	37 %
Umidità Massima	(ore : 11.13L)	55 %
Vento Massimo Dir./Int.	(ore : 23.51L)	240' 09 nodi



Situazione Sinottica: Il debole flusso di correnti meridionali in quota, alimentato da una depressione presente sul settore orientale del Mare di Ross, si attenua temporaneamente mentre una nuova depressione centrata sulla parte settentrionale del mare di Ross tende a proiettare in senso meridiano una profonda saccatura determinando nella seconda parte della giornata l'insacco di un flusso di correnti umide e perturbate sulla parte centro-meridionale del Victoria Land.

Synoptic Situation: The weak upper southern flow made by a low pressure settled on the eastern part of Ross Sea is temporarily weakening while a new low pressure deepening on the northern part of Ross Sea will intrude a deep trough into the Ross Sea, triggering a new burst of the southern flow along the Transantarctic Mountains: as a result warm air masses, rich of moisture moving on the lee side will make cloudiness increasing during the second part of the day along the coastal areas of central and southern Victoria Land.

BAIA TERRA NOVA

Italiano: Molto nuvoloso per nubi stratiformi con addensamenti associati a deboli precipitazioni nevose. Nuvolosità in temporanea diminuzione in serata. Visibilità e definizioni buone. Venti deboli meridionali, temporaneamente moderati occidentali nelle prime ore del mattino e tendenti a divenire moderati meridionali nella tarda serata.
English: Broken by stratiform clouds with thicker patches associated with light snowfall. Cloudiness temporary decreasing by the evening. Light southern winds becoming moderate westerly during the morning and moderate southern ones by the evening. Visibility and definitions good.

MC MURDO AREA

Italiano: Nuvolosita' irregolare di tipo stratiforme in piu' livelli ma senza precipitazioni in intensificazione dalla serata. Venti moderati sud-orientali. Visibilità e definizioni buone.
English: Scattered to broken by mid and high levels clouds becoming by the evening overcast. Moderate southeastern winds. Good visibility and definitions.

- **Tendenza per le prossime 24 ore (Area di BTN):** Molto nuvoloso o coperto con precipitazioni nevose deboli ed intermittenti. Venti moderati meridionali.
- **Outlook for the next 24 hours (TNB Area):** Overcast by low and mid levels clouds with intermittent snowfalls; moderate southern winds.

The Weather Forecaster
Major Giorgio ALESSIO DETTO GRASSI